



WEEKLY CONSTRUCTION UPDATE

| | | |
|--|-----------------------|-------------------------------------|
| Project Title: Whitman 20-Inch Force Main Replacement CWSRF – 6885 | | Report #: EP – 8-11-2023 |
| Project Location: Brockton, MA, and Whitman, MA | From: 8/7/2023 | Week: 56 |
| Client: Whitman, MA | To: 8/11/2023 | Engineer Project #: 279-1901 |
| On-Site Engineer: Dick Carroll, Environmental Partners | | Contact: (978) 815-3336 |

Contractor: C. Naughton Corp.

CONSTRUCTION ACTIVITIES COMPLETED THIS WEEK:

1. C. Naughton continued construction activities in both the Town of Whitman and in the City of Brockton this past week. The activities performed by C. Naughton this week include:
 - a. Continue sewer force main tie-in connection at Auburn Street Pump Station.
 - b. Complete gate valve installation on existing 20" DI sewer force main on Southfield Drive.
 - c. Commissioning of magnetic flow meter inside meter pit near Auburn Street West Pump Station.
 - d. Start grout injection of annular space in HDPE pipe crossings in cross-country easement between Auburn Street, Alger Street, and Thatcher Street.
 - e. Continuation of punch list activities.
 - f. General cleanup and site restoration.
2. The Town's paving contractor performing the full-depth reclamation of Auburn Street (T.L. Edwards Inc.) continued their paving work this past week on Auburn Street. The roadway was detoured while this work was being performed.
3. All trenches were backfilled and compacted prior to leaving for the weekend.
4. All areas were cleaned prior to leaving for the weekend.

WEEK LOOK-AHEAD SCHEDULE:

1. C. Naughton does not anticipate performing any work on-site next week, as they are currently waiting on additional materials needed to complete the final tie-in connection at the Auburn Street Pump Station. Work at the Auburn Street Pump Station is scheduled to resume later this month.
2. Daily traffic updates to the Town's project website will be posted to alert residents of any planned roadway closures and detours.

PROJECT PHOTOS

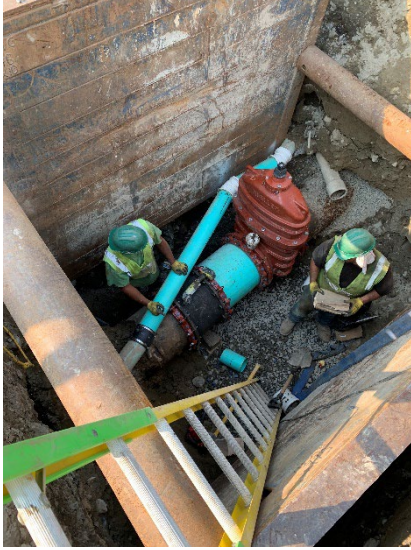


Photo 1: Install of 20" Gate Valve on Southfield Drive

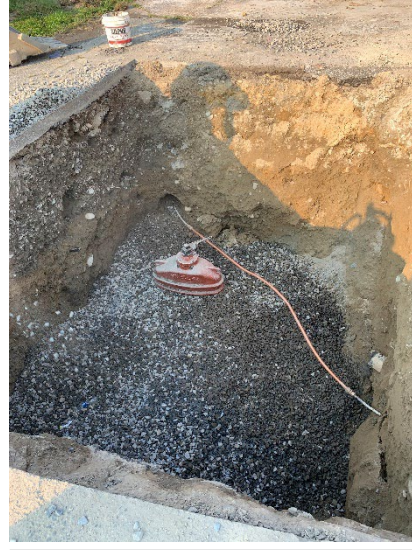


Photo 2: Backfilling of 20" Gate Valve on Southfield Drive



Photo 3: Force Main Tie-In Connection Progress at Auburn Street Pump Station



Photo 4: Grout Truck for Grouting of Annular Space in Easement Crossing