



## WEEKLY CONSTRUCTION UPDATE

<b>Project Title:</b> Whitman 20-Inch Force Main Replacement CWSRF – 6885		<b>Report #:</b> EP – 8-4-2023
<b>Project Location:</b> Brockton, MA, and Whitman, MA	<b>From:</b> 7/31/2023	<b>Week:</b> 55
<b>Client:</b> Whitman, MA	<b>To:</b> 8/4/2023	<b>Engineer Project #:</b> 279-1901
<b>On-Site Engineer:</b> Christopher Gallagher, Environmental Partners		<b>Contact:</b> (508) 728-5867

**Contractor:** C. Naughton Corp.

### CONSTRUCTION ACTIVITIES COMPLETED THIS WEEK:

1. C. Naughton continued activities at the Auburn Street Pump Station this past week. The activities performed by C. Naughton this week include:
  - a. Continue sewer force main tie-in connection at Auburn Street Pump Station.
  - b. General cleanup and site restoration.
  - c. Continuation of punch list activities along Auburn Street.
2. All trenches were backfilled and compacted prior to leaving for the weekend.
3. All areas were cleaned prior to leaving for the weekend.

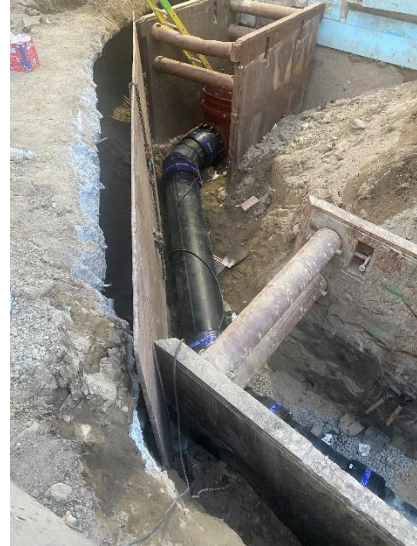
### WEEK LOOK-AHEAD SCHEDULE:

1. C. Naughton will continue on-site work next week at the Auburn Street Pump Station (week of 8/7/23). The work activities that will be performed next week include the following:
  - a. Continue force main tie-in connection at Auburn Street Pump Station
    - i. Schedule TBD based on obtaining additional materials needed to complete final tie-in connection.
  - b. General cleanup and site restoration.
  - c. Continuation of punch list activities along Auburn Street.
2. Daily traffic updates to the Town's project website will be posted to alert residents of any planned roadway closures and detours.

## PROJECT PHOTOS



*Photo 1: Force Main Tie-In Connection at Auburn Street Pump Station*



*Photo 2: 20-Inch HDPE Force Main Entering Auburn Street Pump Station*



*Photo 3: Installation of Launching Barrel*



*Photo 4: Trench Backfilling at Auburn Street Pump Station*

**Prepared By:** Javier Avila, Engineer, Environmental Partners Group, LLC

**Reviewed By:** Andrew T. Grotta, Project Manager, Environmental Partners Group, LLC