



WEEKLY CONSTRUCTION UPDATE

Project Title: Whitman 20-Inch Force Main Replacement CWSRF – 6885	Report #: EP – 5-19-2023	
Project Location: Brockton, MA, and Whitman, MA	From: 5/15/2023	Week: 50
Client: Whitman, MA	To: 5/19/2023	Engineer Project #: 279-1901
On-Site Engineer: Bob Fitzgerald, Environmental Partners		Contact: (508) 776-7556
Contractor: C. Naughton Corp.		

CONSTRUCTION ACTIVITIES COMPLETED THIS WEEK:

1. On Monday (5/15/23) and Tuesday (5/16/23), C. Naughton's crew resumed activities at the Auburn Street Pump Station. The crew removed bracing and thrust blocking at the end of the new 20" PVC force main used during pressure testing. The crew also excavated to expose both the existing 20" DI force main and new 20" PVC force main in order to prep for their upcoming pipe installation and tie-in connection work at the Auburn Street Pump Station.
2. On Wednesday (5/17/23), Thursday (5/18/23), and Friday (5/19/23), C. Naughton's crew moved over to Southfield Drive to begin excavation for the new gravity sewer manholes and associated gravity sewer main piping. The crew installed approximately 33 ft of 20" PVC gravity sewer main and 1 gravity sewer "dog-house" type manhole.
3. All trenches will be backfilled, compacted, and paved prior to leaving for the weekend.

WEEK LOOK-AHEAD SCHEDULE:

1. C. Naughton plans on being on-site next week (week of 5/22/2023) to continue working on the following activities:
 - a. Finish work activities on Southfield Drive for gravity sewer main connection.
 - b. Begin setting up temporary bypass pumping system at Auburn Street Pump Station.
 - c. Temporary shutdown of Auburn Street Pump Station (projected to start on Tuesday 5/23/23) in order to complete force main tie-in connection work.
 - d. Force main tie-in connection and force main bypass drain installation work at the Auburn Street Pump Station.
2. Daily traffic updates to the Town's project website will be posted to alert residents of any planned roadway closures and detours.

PROJECT PHOTOS



Photo 1: Trench Backfilling at Auburn Street Pump Station

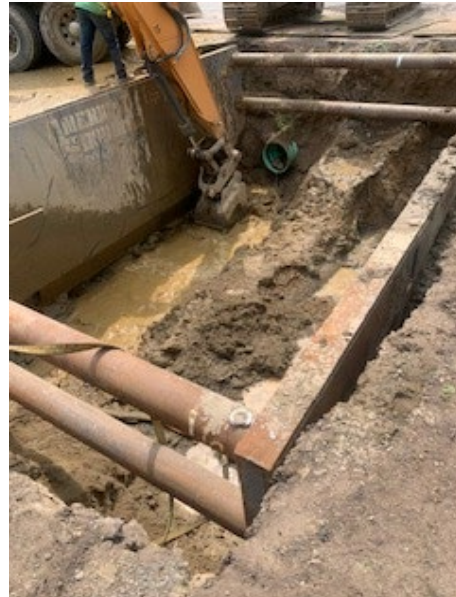


Photo 2: Excavation to Expose Existing Force Main



Photo 3: New Sewer Manhole with Concrete Collar on Southfield Drive



Photo 4: Mobilization of Equipment on Southfield Drive

Prepared By: Javier Avila, Engineer, Environmental Partners Group, LLC

Reviewed By: Andrew T. Grotta, Project Manager, Environmental Partners Group, LLC