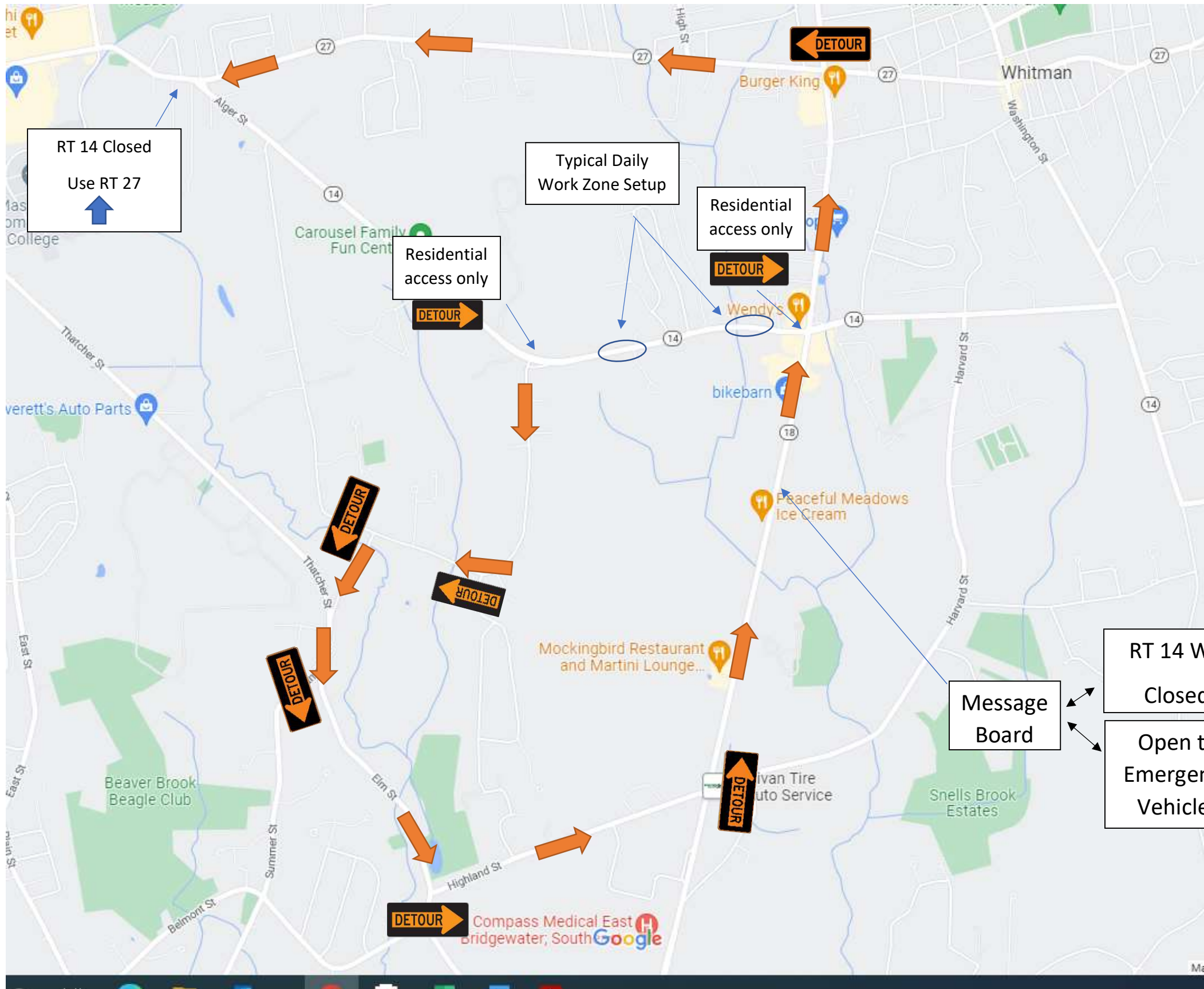




## DAILY WORK & TRAFFIC UPDATE

<b>Project Title:</b> Whitman 20-Inch Force Main Replacement CWSRF - 6885	<b>Date:</b> 7-11-2022
<b>Construction Location:</b> Auburn Street, Whitman, MA	<b>Construction hours:</b> 7 A.M – 5 P.M.
<h3>ANTICIPATED WORK SCHEDULE AND TRAFFIC MANAGEMENT:</h3>	
<ol style="list-style-type: none"> <li>1. C. Naughton has two crews working on Auburn Street today. A water main crew will be working on the west side road shoulder by #703 Auburn St. A sewer crew will be working by #807 Auburn Street.</li> <li>2. Auburn Street will be closed by #807 Auburn Street. Traffic will be detoured around Auburn Street via a detour path off of Route 18, taking Route 27 to Highland Street. A Traffic Management Plan showing the detour route is attached.</li> <li>3. Work is expected to take place from 7:00 a.m. until 5:00 p.m. All trenches will be backfilled and paved before leaving for the day.</li> </ol>	
<p><b>Prepared By:</b> <u>Amanda Shanahan, Project Engineer, Environmental Partners Group, LLC</u>  <b>Reviewed By:</b> <u>Andrew Grota, Project Manager, Environmental Partners Group, LLC</u></p>	



1. All construction signs per MassDOT MUTCD.
2. Work hours shall be 7am to 5pm.
3. C. Naughton Corp to order police details.

